

MEETING SPACE



MEETING FACILITY OVERVIEW

<i>Function Room</i>	<i>Square Feet</i>	<i>Dimensions</i>	<i>T/S</i>	<i>C/R</i>	<i>U/Shape</i>	<i>Rounds of 10</i>	<i>8' x 10' Exhibit</i>	<i>Reception</i>
Paradise Ballroom	10,064	74 x 136 x 16	1,000	650	—	720	52	1,100
Paradise Foyer	2,800	40 x 70 x 12	—	—	—	—	—	400
Royal or Palm Room*	1,850	74 x 25 x 12	180	100	—	110	—	150
Any Single (I-V)	375	15 x 25 x 12	35	18	15	30	—	20
Any Two (I-V)	750	30 x 25 x 12	70	36	27	50	—	40
Any Three (I-V)	1,125	44 x 25 x 12	110	60	39	70	—	80
Any Four (I-V)	1,475	59 x 25 x 12	150	80	50	90	—	110
Pacific Room	3,922	74 x 53 x 16	400	210	72	250	—	400
Island Room	2,294	74 x 31 x 16	220	130	63	150	—	250
Royal Pacific	5,772	74 x 87 x 16	550	380	—	410	—	580
Royal Pacific Island	8,066	74 x 109 x 16	780	520	—	650	—	800
Pacific Island	6,216	74 x 84 x 16	630	330	—	390	—	600
Pacific Island Palm	8,066	74 x 109 x 16	780	520	—	650	—	800
Island Palm	4,144	74 x 56 x 16	350	230	—	280	—	380
Mission Bay Room	3,950	79 x 50	340	172	64	240	—	350
Mission Bay Gallery	676	26 x 26	60	36	27	30	—	40
Dockside Room	1,920	60 x 32 x 12	150	100	50	108	—	175
Dockside Foyer	684	12 x 57	—	—	—	—	—	—
Garden Room	1,700	46 x 37 x 11	165	84	46	100	—	100
Garden Foyer	900	18 x 50	—	—	—	—	—	—
Bay View Room	1,575	45 x 35 x 12	144	84	44	90	—	150
Bay View / Sunset Foyer	676	26 x 26	—	—	—	—	—	—
Sunset Ballroom	7,072	52 x 136 x 12	600	370	—	440	38	600
Sunset Deck	2,176	16 x 136 x 16	—	—	—	—	—	250
Sunset I	962	26 x 37 x 12	72	46	24	40	—	50
Sunset II	962	26 x 37 x 12	72	46	24	40	—	50
Sunset III	1,664	52 x 32 x 12	140	96	42	110	—	100
Sunset IV	1,664	52 x 32 x 12	140	96	42	110	—	100
Sunset V	1,820	52 x 35 x 12	160	112	45	110	—	150
Sunset I & II	1,924	52 x 37 x 12	150	100	42	100	—	100
Sunset I, II & III	3,588	52 x 69 x 12	270	174	—	220	—	300
Sunset I, II, III & IV	5,252	52 x 101 x 12	450	250	—	300	—	500
Sunset III, IV & V	5,148	52 x 99 x 12	475	260	—	320	—	350
Sunset IV & V	3,484	52 x 67 x 12	280	180	—	240	—	200
The Boardroom	450	15 x 30 x 12	(Executive Board Table for 16 Only)					—
The Director's Room	540	18 x 30 x 12	50	30	24	30	—	40
Single Executive Suite	441	21 x 21 x 8	36	24	16	30	—	40
Double Executive Suite	882	42 x 21 x 8	72	54	36	60	—	75
Lobby Lagoon I		21 x 21 x 12	(Registration Setup Only)					
Lobby Lagoon II		16 x 16 x 20	(Registration Setup Only)					
Sunset Pavilion	14,874	185 x 108 x 28	1,725	1,000	—	1,080	73	1,450
Sunset Pavilion South	10,638	98 x 108 x 28	1,250	675	—	760	56	1,000
Sunset Pavilion North	4,236	86 x 43 x 28	440	225	—	280	17	500

OUTDOOR LOCATIONS

Executive Suite Lawn	5,000	—	—	—	—	320	—	500
Sunset Terrace	4,000	—	—	—	—	240	—	500
Mission Bay Patio	1,800	—	—	—	—	180	—	200
Pine Hill	6,500	—	—	—	—	150	—	350
Paradise Terrace	6,500	—	—	—	—	550	—	600
Island Point Lawn	1,200	—	—	—	—	50	—	75

All square footage listed is approximate.

GROUP RECREATION



Team Bonding

LET THE GAMES BEGIN

Participate in a mix of our favorite summer field games set to the highly competitive theme of Hunger Games.

PIRAHNA TANK

Let your entrepreneurial spirit out with our version of Shark Tank. Test your team's ability to take a concept and pitch a legitimate business to senior leaders of Paradise Point.

PAINT, PINOT AND PORTER

Create a canvas masterpiece with our resident artist while sampling local San Diego Craft Porter Beer or California Pinot Noir.

Gift of Giving Back

CHARITY PUTT-PUTT

Team members work together to build a putting course using different materials provided. Your group will be required to manage resources, use their imagination and collaboration skills to complete this challenge.

BUILD A BEAR

Give back to a non-profit or local children's hospital of your choice. This fun group competition will have your team feeling proud as they hand-stuff animals that kids will love.

Thrive Like a Local

PARADISE POINT MARINA

Our full-service marina offers kayak, SUP, sailboats, jet-skis, water bikes and power boat rentals. Deep sea fishing charters and duffy boats also available.

SURF

Learn to shred waves through the Paradise Surf Academy. Each 3-hour class starts with a quick boat ride to Mission Bay Aquatic Center, where highly experienced staff will guide your team through a surf lesson.

Play in our Backyard

RUN

Whether you're a beginning or experienced runner, our dedicated Island staff member can lead a group through 12.25 miles of scenic jogging trails starting from our island.

RIDE

A variety of beach cruiser bikes and quadracycle surreys are available at the Island Adventure Hut. Opt for a guide and be led on a ride to discover the beauty along the Pacific Coast.

HIKE

With an abundance of trails in San Diego, the hiking options are endless. Travel with a companion or allow our expert to guide you on a hike to the cliffs high above the Pacific Ocean.

Little Vacation Village

EVENT CHILD CARE

Our qualified recreation staff are happy to organize a custom childcare program for your group. Various themes and Food and beverage options available.

DINING





Barefoot Bar & Grill has been a local favorite for its panoramic Mission Bay views since opening in 1962. This legendary restaurant offers a laid-back atmosphere, lineup of California craft beers, and bold, creative takes on American dishes. Eat inside or outdoors next to a tropical waterfall and sea-life lagoon.

The best of Baja, without a trip across the border! Located at the Main Pool, the Tropics Cantina serves authentic "fresh Mex" straight from Baja California. Get a taste of Mexico's colorful culture and cuisine in the form of homemade salsa, fish tacos, cochinitas, carne asada and frosty margaritas.

Craft and catch converge at Tidal, perched where land meets sea on the shores of Mission Bay. Our talented Chefs curate a thoughtful selection of local seafood and craft beverages that, like the ever changing tides, shift seasonally at Mother Nature's whim.

Located next to the Main Pool and The Spa at Paradise Point, Island Market offers beverages, snacks, wine and supplies to make s'mores and bonfires at one of our 15 fire pits. Be sure to also peruse this unique boutique's extensive selection of apparel, sundries and locally-made gifts and souvenirs.

Caveman Pizza Company fires up quality pies, salads, and sandwiches using only the freshest homespun dough and ingredients. Build your own pizza, choosing from two crusts, three sauces and over 15 tasty toppings, or try some of the popular specialty recipes.

ACCOMMODATIONS





LANAI PATIO

Two queen beds, full quartz bathroom, hair dryer, iron and ironing board, cable television, alarm/clock radio, two-line speaker phone with voice mail and date ports, high speed internet access, Keurig® coffee maker, and mini refrigerator. Guestrooms are approximately 450 square feet. Connecting rooms available and bed type subject to availability at check-in.



LANAI GARDEN

Guestrooms are nestled throughout the resort gardens and tropical landscaping. Offering one king bed with queen sofa sleeper or two queen beds. Guestrooms are approximately 460 square feet. Connecting rooms available and bed type subject to availability at check-in.



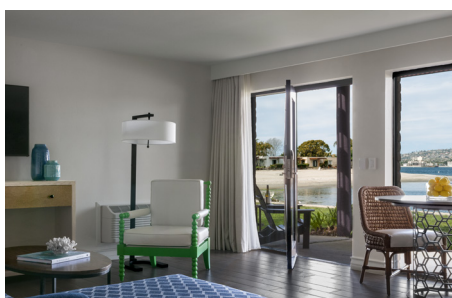
LANAI BAYSIDE

Just steps from one mile of sandy beach, our Lanai Bayside guestrooms offer spectacular views of Mission Bay right outside your patio. Guestrooms are approximately 460 square feet. Connecting rooms available and bed type subject to availability at check-in.



GARDEN & BAYSIDE JUNIOR SUITE

Our Junior Suites are located steps from the water or among the palms and tropical blossoms. Junior Suites offer a combined sleeping and living area featuring one king bed and queen sofa sleeper. Studio Suites are approximately 560 square feet, connecting rooms available.



GARDEN BUNGALOW SUITE

Our Garden Bungalow Suite guestrooms are nestled throughout the resort gardens and tropical landscaping. The one bedroom suite offers one king bedroom, one bath and separate living room with queen sofa sleeper. Bungalows are approximately 650 square feet, connecting rooms available.

BAYSIDE BUNGALOW SUITE

Just steps from one mile of sandy beach, the Bayside Bungalow is located closest to the water offering spectacular views of Mission Bay. The one bedroom suite offers one king bedroom, one bath and separate living room with queen sofa sleeper and full wet bar. Bungalows are approximately 650 square feet, connecting rooms available.